

NOVUS GLASS WINVALE PARK STAGES



Photo: Tim Allott

SAFETY PLAN

SUNDAY, 14TH APRIL 2024

WWW.RALLYWA.COM

**NOVUS
glass**

Repair & Replacement

JAPLINE
Subaru Servicing & Parts



DUNLOP



SUPERIOR
CUSTOMS



RALLYWA
NETWORK-IT
STTechnic
SPECIALIST SUBARU GARAGE

90 years
WACC
West Australian
Car Club
1933 - 2023

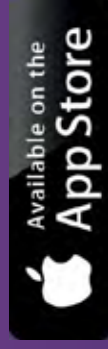


Sportivity

**For direct event information please download
the Sportivity app and insert this password:**

WACC

Sportivity app is available in



www.sportivity.com

JAPLINE

Subaru Service Specialists



- Log Book Servicing
- Wheel Alignments
- Head Gasket Repairs
- Air Con Servicing

 **Natrad**[®]
Radiators & Auto Air
Malaga

- Radiator Servicing
- Radiator Re-core
- Pressure Testing
- Custom Radiators

Contact us

(08) 9209 1434

Visit our Website

www.Japline.com.au

www.Natradmalaga.com.au

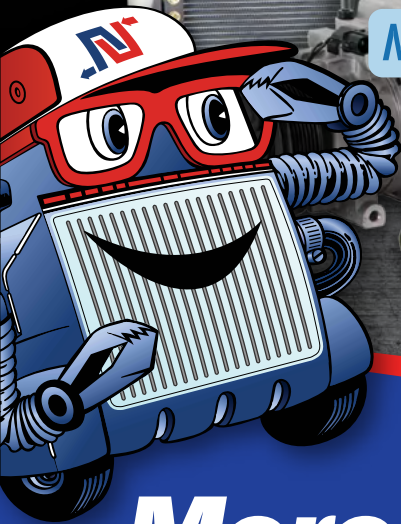


Natrad®

Radiators & Auto Air



Nip into Natrad



More Than Just Radiators

- ➔ Performance Applications
- ➔ 4x4 & Passenger Vehicles

Proudly Supporting



- | | |
|---|---|
| <input checked="" type="checkbox"/> Diagnostic Checks | <input checked="" type="checkbox"/> Repairs |
| <input checked="" type="checkbox"/> Soldering | <input checked="" type="checkbox"/> Fabrication |
| <input checked="" type="checkbox"/> Welding | <input checked="" type="checkbox"/> Clean-outs |


Trust a Specialist!

ALBANY
BROOME
BUSSELTON
ESPERANCE
FREMANTLE/BOORAGOON

GERALDTON
JOONDALUP
KALGOORLIE
KELMSCOTT
MALAGA

MANDURAH
MIDVALE
MORLEY
NORTHAM
ROCKINGHAM

131RAD
7 2 3
natrad.com.au

 Like us on Facebook

POWERPLAY

 **ELECTRIC
KARTING
GAMES**



BMG AUTOS

 **REPAIRS & SERVICING** 

BAYSWATER 0424 284 160



**Alcorn
Motorsport** 

Welcome to WA Car Club inc, **THE Rally Club!**

Established in 1933, the WA Car Club celebrated our **90th anniversary** in 2023 making it one of the oldest car clubs in WA and the oldest 'Rally' club in Australia.

Our trophy cabinet contains many awards presented to club members over the years recognising their motorsport achievements.

On the right is a list of the most recent competition awards received by individual members of the WA Car Club for their 'gravel' rallying endeavours.

But competition is only one element of **THE Rally Club!** As organisers and volunteers the WA Car Club collectively:

- Organise 4 top class rallies:
 - Winvale Park Stages
 - Forest Rally
 - Karri Rally
 - Experts Cup
- Organise the 6 round Summer Autocross Series in conjunction with the Perth Motorplex
- Assist with the running of WA's only tarmac rallies and ralliesprints:
 - Tarmac West
 - Tarmac South West
 - Tarmac Rallysprint series
 - Tarmac Bunbury Sprint
 - Tarmac Albany Sprint
- Invest in rallying in WA with new equipment for setting up stages, equipment maintenance, Officials Training, First Aid Training and Co-Driver courses.

Definitely a group you want to be associated with! Complete a Membership Application now to join the WA Car Club...**for over 90 years** we have been **THE Rally Club!**



Photo: Tim Allott

THE Rally Club - home of the:

2023 WA Rally Championship

- Champion Co-Driver
- 2WD Champion Driver
- 2WD Champion Co-Driver
- Rookie Driver & Co-Driver

2022 WA Rally Championship

- Champion Co-Driver
- 2WD Champion Driver
- 2WD Champion Co-Driver
- Rookie Driver & Co-Driver

2021 WA Rally Championship

- 2WD Champion Driver
- 2WD Champion Co-Driver
- Rookie Driver & Co-Driver

2021 Clubman Cup Series

- Rookie Driver
- Rookie Co-Driver

2020 WA Rally Championship

- Champion Co-Driver
- 2WD Champion Driver
- 2WD Champion Co-Driver
- Rookie Driver & Co-Driver

2019 WA Rally Championship

- 2WD Champion Driver
- 2WD Champion Co-Driver
- Rookie Driver & Co-Driver

2018 WA Rally Championship

- Champion Co-Driver

2017 Australian Rally Championship

- Champion Co-Driver

Contents

1.0 Event program	3
2.0 Key event information	4
2.1 Address	4
2.2. Motorsport Australia – Officials of the Rally.....	4
2.3 Organising Committee	4
2.4 Emergency Telephone Numbers & Key Contacts	5
3.0 Command Radio System	7
3.1 – Call signs.....	7
4.0 Stage Duties	8
4.1. Stage Officials.....	8
4.2. Special Stage Road Closures.....	8
4.3. Safety Duties – Stage Commander.....	8
4.4 – Safety Duties -Deputy Stage Commander (Stop)	9
4.5. Safety Duties – Stage Safety Officer (Setter).....	9
5.0 Course Vehicles.....	10
5.1. Advance Cars. (Setter).....	10
5.2 Triple Zero (000) Safety Car. (Clocks)	10
5.3. Double Zero (00) Safety Car	10
5.4 – Zero (0) Safety Car.....	10
5.5 – Sweep Safety Car (Post Stage)	11
5.6 – Recovery Vehicle	11
6.0 Safety of personnel	11
6.1 Spectator Safety.....	11
6.2 Spectators out of Control.....	11
6.3 Marshal Safety	11
7.0 Overview map of stages.....	12
8.0 Helena	13
8.1 Helena Stage SS1 & SS4 Overview Map	14
8.2 Helena Stage SS7 (<i>reverse</i>) Overview Map	15
8.3 Helena Stage Bunt Lists.....	16
9.0 Georgia.....	20
9.1 Georgia Stage SS2 & SS5 Overview Map.....	21
9.2 Georgia Stage SS8 (<i>reverse</i>) Overview Map.....	22
9.3 Georgia Stage Bunt Lists	23

10.0 Jordan	25
10.1 Jordan Stages SS3 & SS6 Overview Map	26
10.2 Jordan Stages SS9 (<i>reverse</i>) Overview Map	27
10.3 Jordan Stage Bunt Lists	28
11.0 Christine	30
11.1 Christine SS10 Overview Map	31
11.2 Christine Stage Bunt List	32
12.0 Road Closure Sign	34
13.0 Stage Safety Officer Accident Appraisal	35
14.0 Accident Appraisal Form	36
15.0 Service Park Map	37
16.0 Running schedule.....	38

1.0 Event program

EVENT PROGRAMME

Wednesday	3 April 2024	2000hrs: Entries Close	Secretariat
Friday	5 April 2024	1300hrs: Entry list published	Secretariat
Tuesday	9 April 2024	1700hrs – 2130hrs Metro scrutiny	STechnic 63 Bickley Road Beckenham WA
Saturday	13 April 2024	1100-1700hrs: Reconnaissance	Winvale Park Complex
Sunday	14 April 2024		
	0630hrs	Rally HQ Opens	Rally HQ Winvale Park Complex
	0630hrs-0730hrs	Represent Scrutiny	Winvale Park Complex
	0730hrs	Last time for change of Vehicle or Crew	Rally HQ
	0820hrs	Drivers Briefing inc. Roll Call and Top 5 Ballot	Rally HQ
	0840hrs	Start Order Posted	Rally HQ
	0900hrs	Start Car 1	TC0
	1400hrs*	Clubman Awards Presentation	Winvale Park Complex
	1530hrs*	Finish Car 1	TC10A
		Post Event Scrutiny commences 30 minutes after 1 st car finishes	Winvale Park Complex
	1630hrs	Provisional Results Posted	Official Noticeboard Online
	1630hrs	WARC Awards Presentation	Winvale Park Complex
	1730hrs	Rally HQ Closes	

*Approximate time only

2.0 Key event information

2.1 Address

The address of the Secretariat for the Event and all correspondence is:

Novus Glass Winvale Park Stages
Event Secretary
PO Box 88,
Forrestfield WA 6058

2.2. Motorsport Australia – Officials of the Rally

Chief Steward	Colin Arkell	9659395	0408 241 144
Steward	Lyndon Sperring	9764811	0430 070 000
Chief Scrutineer	Scott McKivett	1911454	0417 976 816
Course Checker	Neil Trethowen	1102541	0400 801 282
WARC Chaplain	Kim Van Keule		0421 211 066

2.3 Organising Committee

Clerk of the Course	Kim Marchant	9879773	0418 923 711
Assistant Clerk of the Course	Stuart Mitchell	1131341	0403 348 439
Deputy Clerk of the Course	Ross Tapper	9660913	0418 950 022
Event Secretary / Treasurer	Deirdre Schokker	1054954	0438 984 719
Results Coordinator	Leon Polak	1035753	0410 103 245
Officials Liaison Officers	Alex Turton	1122356	0407 582 709
Service Park Manager	Wayne Schokker	1054955	0408 930 681
Competitor Relations Officer	David Smith	9769064	0419 894 555

2.4 Emergency Telephone Numbers & Key Contacts

Organisation	Description	Phone Number
Police	Emergency	000
- Non Urgent	Police Operations Centre	131 444
Ambulance	Emergency	000
	Northam	08 9621 1633
	St John Ambulance	On-Site (Radio Comms)
Fire	Emergency	000
Recovery	AAAC	0408 930 681
Hospital	Midland	08 9462 4000
	Northam	08 9690 1300
Council/Shire	Northam	08 9622 6100
Clerk of Course	Kim Marchant	0418 923 711
Assistant Clerk of Course	Stuart Mitchell	0403 348 439
Deputy Clerk of Course	Ross Tapper	0418 950 022
Road Book	Neil Trethowen	0400 801 282
Chief Steward	Colin Arkell	0408 241 144
Steward	Lyndon Sperring	0430 070 000
Doctor		
M.I.V. 1	St John Ambulance	
000	Dylan Jackson / Mike Kerridge	0405 298 563 / 0419 777 794
00	Neil Trethowen	0400 801 282
0	Alex White / Lisa White	
Sweep	Milan Dvorak	0490 520 182
Scrutineer	Scott McKivett	0417 976 816
Service Park Manager	Wayne Schokker	0417 914 990
RAP Commander	Beth Hastie	0419 943 267
Compliance Checker	Neil Trethowen	0400 801 282

2.5 Command Centre

The Rally Command Centre is located at:

Competition	Winvale Park Complex	724 Leaver Rd, Copley
--------------------	-----------------------------	------------------------------

Officials located at Command Centre

Role	Name	Phone No.
Clerk of Course	Kim Marchant	0418 923 711
Assistant Clerk of Course	Stuart Mitchell	0403 348 439
Deputy Clerk of Course	Ross Tapper	0418 950 022
Command Radio	Deirdre Schokker	0438 984 719
Vehicle Tracking	Grahame Jordan	0420 980 084

2.6. Rally Headquarters

Officials located at Rally Headquarters

Role	Name	Phone No
Event Secretary	Deirdre Schokker	0438 984 719

2.7. Stage and Deputy Stage Commanders

Special Stage Name	Stage Commander	Deputy Stage Commander
Helena	Ross Tapper	Nicholas Garratt
Georgia	Ethan Dawson	Megan Peek
Jordan	Bernie O'Brien	Mick Watts
Christina	Ross Tapper	Megan Peek

3.0 Command Radio System

3.1 – Call signs

TITLE	NAME	CALLSIGN
HEADQUARTERS		
RALLY BASE	Deirdre Schokker	RALLY BASE
DEPUTY CLERK OF COURSE	Ross Tapper	DEPUTY
EVENT SECRETARY	Deirdre Schokker	SECRETARY
OFFICIAL VEHICLES		
CAR TRIPLE ZERO	Dylan Jackson / Mike Kerridge	TRIPLE ZERO
CAR DOUBLE ZERO	Neil Trethowen	DOUBLE ZERO
CAR ZERO	Alex White / Lisa White	ZERO
SWEEPER	Milan	SWEEPER
RESCUE VEHICLE		
RESCUE VEHICLE 1	Ashendons Fire and Rescue	RESCUE ONE
RESCUE VEHICLE 2	Ashendons Fire and Rescue	RESCUE TWO
FIELD PERSONNEL		
STAGE SETTERS		
	Sam Wriighthouse	HELENA SETTER
	Liam Turton	GEORGIA SETTER
	Bernie O'Brien	JORDAN SETTER
CHIEF MEDICAL OFFICER	St John Ambulance	MEDIC ONE
CHAPLAIN	Kim van Keule	CHAPLAIN
SPECTATOR MARSHALL		SPECTATOR ONE
REGROUPS & PARC FERME	Wayne Schokker	RAP ONE
SCRUTINEERS	Scott McKivett	SCRUTINY ONE
COMPETITOR RELATIONS	David Smith / Haydn Joss	CRO
SOS Co-ordinator	Richard Heffernan	SAFETY THREE
	Rod Spink	CHARLIE SOS
STAGE COMMANDERS		
HELENA	Ross Tapper	HELENA START
GEORGIA	Ethan Dawson	GEORGIA START
JORDAN	Bernie O'Brien	JORDAN START
CHRISTINA	Ross Tapper	CHRISTINA START
STAGE DEPUTYS		
HELENA	Nicholas Garratt	HELENA STOP
GEORGIA	Megan Peek	GEORGIA STOP
JORDAN	Mike Watts	JORDAN STOP

4.0 Stage Duties

4.1. Stage Officials

Stage Start: Each Special Stage Start will be attended by:

- Stage Commander
- Post Chief
- Timer
- Record Keeper
- Starter
- Communications Officer
- Stage Safety Officer

Stage Stop: Each Special Stage Stop will be attended by:

- Deputy Stage Commander
- Post Chief
- Timer
- Record Keeper
- Communications Officer

Specific duties listed in Operations Manual

4.2. Special Stage Road Closures

All special Stages are conducted on private roads within the Winvale Park Complex, 724 Leaver Road, Copley.

All major points of access to the special stages including the Start and Stop points, will be clearly marked 'Road Closed' using Signs, and Manned on the road giving the access. In addition, the access road will be made impassable by parking vehicles across the road or by barrier. Non-access roads will also be taped.

Interconnecting roads between Special Stages will have barriers placed strategically across the road and also be manned in addition to normal road closures.

4.3. Safety Duties – Stage Commander

Prior to the start of EACH competitive 'Special Stage' the Stage Commander will ensure that:

- All Road Access to the Special Stage is Closed.
- Access to the Special Stage from this time will only be given to Authorised or Official Vehicles observing their cut off times.
- All Road Closure points are manned or alternatively securely closed.
- Traverse the course and ensure all signs and bunting etc. are correctly erected, marshals etc are in position and the
- Access Control officials are in place.
- Ensure access to the Stage remains secure after control marshals are in position. Receive Stage "AMBER" and Stage "BLUE" messages via radio from Rally Base.
- 000 will advise Rally Base that stage is AMBER.
- 00 will advise Rally Base that stage is GREEN. Ensure the radio is monitored at all times.
- Check that each vehicle entering the stage has the correct access pass.

In the event of an accident, the interruption of a Special Stage and the deployment of FIVs and other emergency vehicles are under the control of the Clerk of Course, after consultation with the Stage Commander. Immediately following sweeper, the stage commander will commence removing all road closures.

4.4 – Safety Duties -Deputy Stage Commander (Stop)

The Deputy Stage Commander will be fully conversant with all the duties of the Stage Commander.

Receive the Stage AMBER and Stage GREEN from the Course Cars who will also immediately pass on the information to Rally HQ for final confirmation

Will receive advice from the stage Stop Radio Operator in relation to incidents that have occurred on stage including missing vehicles and will relay that information promptly to the Rally Command Centre.

Interview competitors when advised of missing vehicles.

Ensure strict stage security is maintained.

4.5. Safety Duties – Stage Safety Officer (Setter)

The Stage Safety Officer position entails the following duties:

Pre – Event

- Travel their Special Stage and prepare a route chart of the Stage.
- The route chart contains a distance from the start and lists every access point onto the stage and what that access point relates to i.e. Farm Property, Minor Road, Major, Road, and Dead End and decides on what manner of security will be applied.
- It should also list the access points that emergency vehicles can access and egress the special stage in the case of an emergency evacuation.
- In consultation with the Stage Commander, Deputy Stage Commander and Event Organisers establish safe locations for Stage Starts, Finishes, Radio SOS points and mid-point locations.
- Locate parking area for the First Intervention Units at the start and mid-point.
- Provide a list of any cleared areas and their relationship to the Special stage that could be used for a helicopter evacuation if required.
- Designate on the Stage Safety Plan Spectator No Go Areas.
- Drive the Stage with the Chief Safety Officer and check the above information and then submit for inclusion in the
- Event Safety Plan.
- Safety Officer to undertake the designated roles at an incident as listed below.
- The Stage Safety Officer should ensure they are fully conversant with every aspect of their stage.

Event

- Prior to the commencement of the Stage ensure that it is set up as per the Stage Safety Plan requirements before the passage of the Course Cars.
- The Stage Safety Officer is located at the Start of the Special Stage and is in radio contact with event headquarters and in a position that they can monitor the Stage.
- Place the FIV on standby when it becomes apparent that there may be a problem on the Special Stage.
- In the case of a missing vehicle have competitors check as they traverse through the special stage and relay information to the Finish or a SOS point in the case of an emergency.
- In the event of an incident that requires the response of the FIV they will travel behind that vehicle to the incident and provide a link between the emergency service personnel and event headquarters. (The FIV Crews contain a crewmember very experienced in Rally Safety use them as a resource and advice).
- Provide advice to the Emergency Services on the evacuation routes.
- Report information accurately to event headquarters and DO NOT change what you have been asked to relay as it can change the complexion of a response unnecessarily.

The need to remain calm and check information cannot be over emphasized as an unnecessary delay in the running of the Special Stage can adversely affect the whole event schedule.

5.0 Course Vehicles

For the course car schedules refer to the first section for each Stage throughout this document.

5.1. Advance Cars. (Setter)

A Road Car (Road One) will arrive at the start of the stage at the Set by Time to ensure that all Road Closures, safety tape, mesh and barriers are correctly positioned. Road One can also assist in the placement of any late road closure officials.

5.2 Triple Zero (000) Safety Car. (Clocks)

The 000 Car will arrive at the start as shown in the Running Schedule

The 000 Car will check the operations of the control at the Time Control Start and Stop Point with control officials and will also check.

- Control posts are ready to operate
- Signs etc are in correct position
- All necessary road closure points are manned or otherwise secured
- All spectator points are ready (if applicable)
- Radio points are in position
- No unauthorised vehicles are on the course
- Check all clocks & RallySafe Units are set correctly

At the Stop Point the Course Car crew signs the Stage AMBER form and hands it to the Deputy Stage Commander. The Deputy Stage Commander then hands the Stage AMBER form to the Radio operator who contacts:

- (a) the Stage Commander at Special Stage Start;
- (b) Rally Headquarters will advise that the Special Stage is "AMBER".

5.3. Double Zero (00) Safety Car

Car 00 travels the Special Stage checking as shown in the Running Schedule:

- Controls are ready to operate and are in correct position
- Check all clocks & RallySafe Units are set correctly
- Road closures are secure
- Spectator points are set up and manned correctly (if applicable) All signs etc are in correct position
- All radio points are in position
- Timing marshals are set up and ready to operate
- No vehicles are on the course.

At the Stop Point Car 00 will, if they are satisfied that the Special Stage is ready:

- (a) Advise Rally Headquarters that the Stage is "BLUE"
- (b) Rally Headquarters will respond that the Special Stage is "GREEN" and ready for competition.

Once the 00 car has entered the Stage, absolutely no vehicle is permitted to enter the Special Stage, official or otherwise, unless specifically authorised by the Clerk of Course.

5.4 – Zero (0) Safety Car

Zero (0) will traverse every Special Stage with a planned finish time on each stage of eight minutes before the first competitor is due to start the stage. This vehicle will be equipped with a siren and flashing light to warn spectators and frighten the wildlife.

5.5 – Sweep Safety Car (Post Stage)

The crew of the Sweep car will:

- Advise status and action required for any vehicle which failed to complete the Special Stage
- Advise Rally Headquarters who will then issue instructions to close the Special Stage to competition.
- Commence sweeping the stage with green light flashing
- Keep track of all cars who have started and finished each stage and ensure all cars are accounted for before moving onto the next stage.

5.6 – Recovery Vehicle

Following the sweep vehicle will be a recovery vehicle that will be responsible for vehicle recovery on that special stage. The recovery vehicle is not to pass the duty FIV vehicle.

The Stage Commander will come through to clear all Road Closure from the Stage.

6.0 Safety of personnel

6.1 Spectator Safety

Spectator Marshalls shall be positioned to ensure spectators remain within the allocated spectator points. Signage and bunting will be erected to delineate the spectator points.

6.2 Spectators out of Control

Spectator Marshalls shall be positioned to ensure spectators remain within the allocated spectator points. In the unlikely event of having spectators out of control they will be directed to leave the event and the Spectator Marshal shall contact Rally Base and advise them of any action taken. If the situation escalates the Clerk of Course is to be notified and if required, Western Australian Police will be requested to attend.

6.3 Marshal Safety

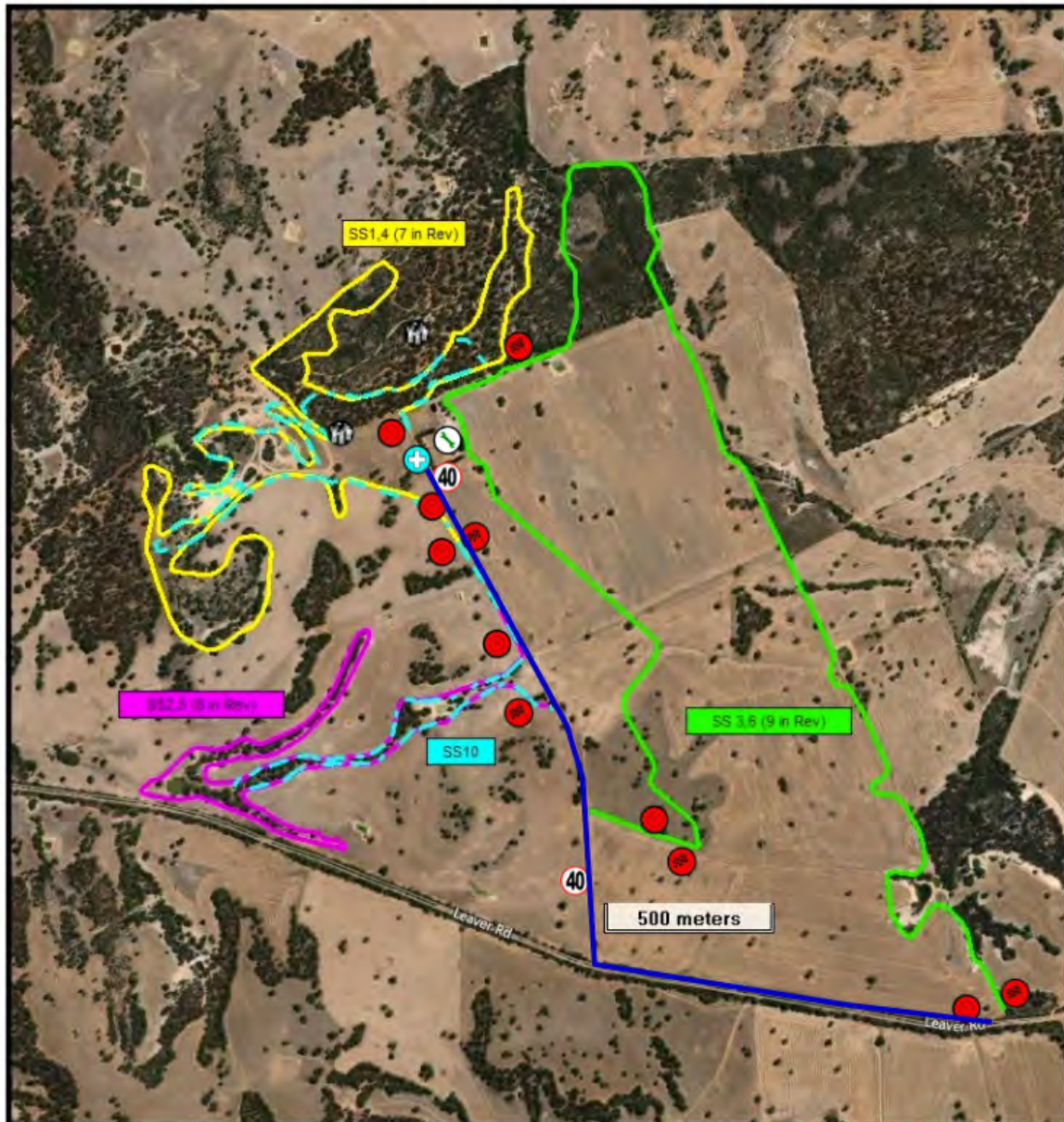
The event organisers ensure that the event officials are able to carry out their role in a safe manner, through training, detailed instructions and officials' briefings.

7.0 Overview map of stages

NOVUS GLASS WINVALE PARK STAGES

14 April, 2024 — Bakers Hill, Western Australia

Overview Map



8.0 Helena

Key Stage times for Course Cars are in accordance with the Running Schedule in Section 16 of this document.

KEY OFFICIALS	NAME	CALL SIGN	MOBILE
STAGE COMMANDER	Ross Tapper	Helena Start	0418 950 022
DEPUTY STAGE COMMANDER-STOP	Nicholas Garratt	Helena Stop	0451 261 944
POST CHIEF TIME CONTROL	Ross Tapper		
POST CHIEF STAGE START	Jan Tapper		
POST CHIEF STAGE STOP			
SETTER	Sam Wriighthouse	Helena Setter	

EMERGENCY SERVICES				
SERVICE	PROVIDER	LOCATED AT	CONTACT	CALL SIGN / PHONE
MIV	St John Ambulance	Service Park		MIV
RESCUE	Ashendon First	Service Park		Rescue One
FIRE	VBFB	Service Park		
AMBULANCE	St John Ambulance	Service Park		Ambulance
POLICE	WA Police Dept	Northam	Officer on Duty	131444
HOSPITAL	St John of God	Midland	Reception	08 9462 4000

MEETING POINTS		
TEAM	LOCATION	TIME
STAGE TEAM	Info Bay, Bakers Hill	06:45
EMERGENCY VEHICLES	Service Park – Winvale Park Complex	08:00

SPECTATOR POINTS			
DISTANCE	LOCATION	SENIOR MARSHAL	CALL SIGN
0.00	N/A	N/A	N/A

COMMUNICATIONS CHANNELS	
COMMAND	22
SOS	11
CB	

8.1 Helena Stage SS1 & SS4 Overview Map



8.2 Helena Stage SS7 (reverse) Overview Map



8.3 Helena Stage Bunt Lists

HELENA Stage Bunt List

DRAFT 1

ROAD CLOSURE & BUNT PLAN

Event: WINVALE PARK 2024		Stage Commander: SAM WRIGHTHOUSE		Approved Rally Controller:							
Stage: HELENA SS1/4		Setter:									
Meet point: INFO BAY BAKERS HILL		Inspection date:									
Meet Time (24hr):		Event date (dd/mm/yyyy):		Sunday 14 April 2024							
		Signature:									
Accum Total	Inst No	Road Name	Road Closure	Official's Details	SOS	Radio	Mesh	Rolls of Tape (20m)	Delimiters	Spectator Points	Comments
TOTAL	29	0	7	0	3	7	56	10	0	0	22
0.00	START				START			L/R 2			START
0.03	0.01		L			1	L/L 2				MAKE SURE GATE IS CLOSED
0.07	0.03						L 1				
0.12	0.05						R/SO 2	L 1			
0.14	0.02						L 1				
0.17	0.03						L/L 3				
0.33	0.16		L			1	L 1	R			DELINEATORS ALREADY IN PLACE
0.39	0.06						L 1				
0.53	0.14						R 1				TO PREVENT CUTTING
0.57	0.04						R 1				TO PREVENT CUTTING
0.78	0.21						R 1				TAPE BETWEEN BARRELS
0.89	0.11		R			1	R 1	SO 1			
0.93	0.04						R 1				
1.44	0.51						L/R 2				
1.70	0.26						L 1				
1.87	0.17						LX2 2	L 1			TAPE WHOLE LEFT SIDE THROUGH BARRIERS
1.91	0.04						R 1				
1.94	0.03						L 1				
2.37	0.43						R 1				
2.44	0.07						R 1				
2.53	0.09		L			1					
2.92	0.39		L			1		L 1			
2.95	0.03						SO 1				
3.02	0.07						R 1	L 1			
3.09	0.07						L/R 2				
3.15	0.06						LX2 2				
3.26	0.11						L/SO 2	L 1			MAKE SURE L GATE IS SHUT AND TAPED ACROSS
3.33	0.07						LIX2R 3				
3.47	0.14				SO		SO 1	SO 1			MESH BETWEEN POSTS NEAR TOWER/MESH FROM POST TO FENCE
3.50	0.03						R 1				
3.55	0.05						R 1				
3.79	0.24						LX2/R 3				USE DEL THAT ARE THERE TO FILL LEFT SIDE IN
3.88	0.09						RX2 2				USE DEL THAT ARE THERE TO FILL RIGHT SIDE IN
3.97	0.09						L/R 2				
4.09	0.12						R 1	R 1			
4.43	0.34						R 1				
4.44	0.01						RX2 2				
4.47	0.03						R 1				
4.63	0.16							L			SLIDE DEL THAT ARE THERE IN PLACE
4.64	0.01							L			SLIDE DEL THAT ARE THERE IN PLACE

DRAFT 1

ROAD CLOSURE & BUNT PLAN

Event:	WINVALE PARK 2024	Stage Commander:	Approved Rally Controller
Stage:	HELENA SS1/4	Setter:	SAM WRUGHTHOUSE
Meet point:	INFO BAY BAKERS HILL	Inspection date:	
Meet Time (24hr):		Event date (dd/mm/yyyy):	Sunday 14 April 2024
			Signature

Accum Total	Instp	Inst No	Road Name	Road Closure	Official's Details	SOS	Radio	Mesh	Rolls of Tape (50m)	Delimiters	Spectator Points	Comments
4.84	0.20								R 1			
4.90	0.06								L 1			
4.93	0.03	27						SO 1				
5.08	0.15							R 1				
5.11	0.03	28						RIL 2				
5.13	0.02	28	L			1		R 1				TAPE AROUND HOUSE TO IDENTIFY CORNER RC AT HOUSE TO PREVENT CUTTING TO PREVENT CUTTING
5.16	0.03	28						L 1				
5.22	0.06	28						L 1				
5.28	0.07							L 1				
5.43	0.14	29						L 1				
5.45	0.02	29						L 1				
5.49	0.04							L 1				
6.36	0.87		R			1		L 1				IN PADDOCK
6.56	0.20							L 1				
6.63	0.07							L 1				
6.97	0.34							L 1				TAPE FROM 6.97 TO 7.05 ACROSS THE FENCE
7.05	0.08							L 1				
7.11	0.06							L 1				
7.34	0.23							L 1				
7.51	0.17	FF						L 1				FLYING FINISH
7.52	0.01							L 1				TAPE FROM POST TO TREE
7.81	0.29	STOP				RI		L 1				STOP

HELENA Stage Bunt List Reverse

DRAFT 1

ROAD CLOSURE & BUNT PLAN

Event: WINVALE PARK 2024	Stage Commander: Approved Rally Controller
Stage: HELENA REVERSE	Setter: SAM WRIGHTHOUSE
Meet point:	Inspection date: Sunday 14 April 2024
Meet Time (24hr):	Event date (dd/mm/yyyy):

Signature

Accum Total	Indep	Inst No	Road Name	Road Closure	Official's Details	SOS	Ratio	Mesh	Rolls of Tape (50m)	Delimiters	Spectator Points	Comments
TOTAL	34	START	0	5	0	4	4	96	9	0	0	19
0.00	0.26	2			START				R 1			START
0.26	0.20	3							R 1			
0.68	0.22								R 1			
0.75	0.07								R 1			TAPE FROM 0.75 TO 0.83 ACROSS FENCE
0.83	0.06								R 1			
1.16	0.33	4							R 1			
1.24	0.06	4		L					R 1			IN PADDOCK
1.41	0.17								R 1			
2.31	0.90								R 1			
2.35	0.04	8							R 1			
2.36	0.01	8							R 1			
2.57	0.21	9							R 1			PREVENT CUTTING
2.64	0.07	9							R 1			PREVENT CUTTING
2.66	0.02	9		R					L/R 1			TAPE AROUND HOUSE RC AT HOUSE
2.69	0.03	9							L/R 1			IDENTIFY CORNER
2.72	0.03	9							L 1			
2.87	0.15	10							R 1			
2.91	0.04								L/R 1			
2.96	0.05								R 1			
3.16	0.20	12							R 1			SLIDE DEL THAT ARE THERE IN PLACE
3.17	0.01	12							R 1			SLIDE DEL THAT ARE THERE IN PLACE
3.54	0.17	13							L 1			
3.36	0.02	13							LX2 2			
3.72	0.36	15							L 1			
3.83	0.11	16							L/R 2			
3.93	0.10	17							LX2 2			
4.02	0.09	18							L/R 2			USE DEL THAT ARE THERE ON THE RIGHT
4.26	0.24								L 1			
4.30	0.04	19							L 1			
4.04	0.04	19				L			L 1			MESH BETWEEN POSTS AND TAPE FROM POST TO FENCE
4.47	0.13								L/R 2			
4.63	0.06	20							R 1	SO 1		MAKE SURE GATE IS CLOSED AND TAPED
4.54	0.01	20							R 1			
4.65	0.11								R 2			
4.70	0.05								L/R 2			
4.78	0.08								L 1	R 1		
4.85	0.07	22							L 1			
4.89	0.04	22		R					R 1			
5.28	0.39	24		R					R 1			
5.36	0.08	25							L 1			
5.44	0.06	25							R 1			
5.87	0.43	27							L 1			
5.91	0.04	27							L 1			

DRAFT 1

ROAD CLOSURE & BUNT PLAN

Event: WYVALE PARK 2024		Stage Commander:		Approved Rally Controller:						
Stage: HELENA REVERSE		Setter: SAM WRIGHTHOUSE								
Meet point:		Inspection date:								
Meet Time (24hr):		Event date (dd/mm/yyyy):		Signature						
Accum Total		Road Closure	Official's Details	SOS	Radio	Mesh	Rolls of Tape (S/m)	Delimiters	Spectator Points	Comments
5.84	0.83					R 1	SO 1	SD		
6.11	0.17					LJR 2	R 1			
6.37	0.26					L 1	R 1			
6.41	0.04					L 1				
6.88	0.45					SO 1	L 2			
6.90	0.04									
7.00	0.10					L 1				
7.22	0.22					L 1				
7.28	0.04					R 1	R 1			
7.40	0.14					R 1				
7.47	0.07					R 1				
7.61	0.14					RX2 2				
7.63	0.02									
7.64	0.01					RX2 2				
7.65	0.01					LJR 2	R 1			
7.67	0.02					L 1				
7.73	0.06					LX2 2				
7.76	0.03									
7.77	0.01									
7.84	0.07	R		1			LJR 2			DEL ALREADY IN PLACE RUN TAPE ACROSS TO CLOSE GAP
				RS						
										TAPE BETWEEN DRUMS TO PREVENT CUTTING TO PREVENT CUTTING
										FLYING FINISH
										MAKE SURE GATE IS CLOSED, TAP GATE STOP

9.0 Georgia

Key Stage times for Course Cars are in accordance with the Running Schedule in Section 16 of this document.

KEY OFFICIALS	NAME	CALL SIGN	MOBILE
STAGE COMMANDER-Start	Ethan Dawson	Georgia Start	0432 475 877
DEPUTY STAGE COMMANDER-Stop	Megan Peek	Georgia Stop	0424 779 143
POST CHIEF TIME CONTROL	Ethan Dawson		0432 475 877
POST CHIEF STAGE START			
POST CHIEF FLYING FINISH			
POST CHIEF STAGE STOP	Megan Peek		0424 779 143
SETTER	Liam Turton	Georgia Setter	

EMERGENCY SERVICES				
SERVICE	PROVIDER	LOCATED AT	CONTACT	CALL SIGN / PHONE
MIV		Service Park		MIV
Rescue	Ashendon First Intervention	Service Park		Rescue One
Rescue	Ashendon First Intervention	Service Park		Rescue Two
FIRE	Ashendon First Intervention	Service Park		Rescue One
AMBULANCE	St John Ambulance	Service Park		Ambulance
POLICE	WA Police Dept	Northam	Officer on Duty	131444
HOSPITAL	St John of God	Midland	Reception	08 9462 4000

MEETING POINTS		
TEAM	LOCATION	TIME
STAGE TEAM	Carpark behind Bakery	7.10am
EMERGENCY VEHICLES	Service Park – Winvale Park Complex	8.00am

SPECTATOR POINTS			
DISTANCE	LOCATION	SENIOR MARSHAL	CALL SIGN
	N/A	N/A	N/A

COMMUNICATIONS CHANNELS	
COMMAND	22
SOS	19
CB	

9.1 Georgia Stage SS2 & SS5 Overview Map



9.2 Georgia Stage SS8 (reverse) Overview Map



9.3 Georgia Stage Bunt Lists

GEORGIA Stage Bunt List

DRAFT 1

ROAD CLOSURE & BUNT PLAN

Event: WINVALE PARK 2024		Stage Commander:		Approved Rally Controller:							
Stage: GEORGIA S2/5		Setter: LIAM TURKTON									
Meet point: CARPARK BEHIND BAKERY BAKERS HILL		Inspection date:									
Meet Time (24hr):		Event date (dd/mm/yyyy):		Signature							
Accum Total	Inst No	Road Name	Road Closure	Official's Details	SOS	Radio	Mesh	Rolls of Tape (50m)	Delineators	Spectator Points	Comments
0.00	20	0	3	0	3	3	10	1	0	0	10
0.14	START				START		SO	1			START
0.22	2										
0.48								L/L	2		
0.86								L			TAPE RUBBISH PIT
1.14	6										
1.83	9		R			1					PARK NEAR BROKEN WOODEN STRUCTURE
2.75	14						SO	1			
2.82	14						R	1			COVER DRIAN AND STAR PICKET
2.84	14				R		R	2			PLACE MESH FROM FENCE TO FOLLOW CORNER AROUND 2 BITS
3.44	16		R			1	R	1			RC TO PARK AGAINST FENCE, MESH ACCESS RD
3.80	17						L	1			
4.45	20		R			1					PARK NEAR POWER POLE, WATCH WATER FLYING FINISH
4.61	FF										DELINEATORS IN PLACE, MESH EITHER SIDE OF THEM
4.65							L	3	L		
4.88	STOP				STOP						STOP

GEORGIA Stage Bunt List Reverse

DRAFT 1

ROAD CLOSURE & BUNT PLAN

Event:	WINVALE PARK 2024	Stage Commander:	APPROXIM RALLY CONTROLLER
Stage:	GEORGIA REVERSE	Setter:	LIAM TURTON
Meet point:		Inspection date:	Sunday 14 April 2024
Meet Time (24hr):		Event date (dd/mm/yyyy):	Sunday 14 April 2024
		Signature	

Accum Total	Indep	Inst No	Road Name	Road Closure	Official's Details	SOS	Radio	Mesh	Rolls of Tape (50m)	Delineators	Spectator Points	Comments
TOTAL	8	START	0	3	0	3	3	11	0	2	0	10
0.13	0.13					START		R 2		R 2		DELINEATORS IN PLACE, MESH EITHER SIDE OF THEM
0.36	0.23	2		L			1	SO 1				PARK NEAR POWER POLE, WATCH WATER
0.56	0.50	5		L			1	L 1				MESH ACCESS RD, RC TO PARK AGAINST FENCE
1.36	0.40							L 2				PLACE MESH FROM FENCE AND FOLLOW CORNER ABOUT 2 BITS
1.93	0.37	8				L		L 1				PLACE MESH TO PROTECT DRAIN AND STAR PICKET
1.95	0.62	8						SO 1				MESH FROM FENCE ACROSS TO PREVENT GOING STRIGHT
2.01	0.96	8										
2.63	0.42			L			1					PARK NEAR BROKEN WOODEN STRUCTURE
3.63	0.80							R 1				
4.56	0.93							R 2				
4.60	0.94							R 1				
4.63	0.93	FF										FLYING FINISH
4.90	0.27	STOP				STOP						STOP

10.0 Jordan

Key Stage times for Course Cars are in accordance with the Running Schedule in Section 16 of this document.

KEY OFFICIALS	NAME	CALL SIGN	MOBILE
STAGE COMMANDER-Start	Bernie O'Brien	Jordan Start	0409 379 253
DEPUTY STAGE COMMANDER-Stop	Mike Watts	Jordan Stop	
POST CHIEF TIME CONTROL			
POST CHIEF STAGE START			
POST CHIEF FLYING FINISH			
POST CHIEF STAGE STOP	Mike Watts		
SETTER	Bernie O'Brien	Jordan Setter	0409 379 253

EMERGENCY SERVICES				
SERVICE	PROVIDER	LOCATED AT	CONTACT	CALL SIGN / PHONE
MIV		Service Park		MIV
Rescue	Ashendon First Intervention	Service Park		Rescue One
Rescue	Ashendon First Intervention	Service Park		Rescue Two
FIRE	Ashendon First Intervention	Service Park		Rescue One
AMBULANCE	St John Ambulance	Service Park		Ambulance
POLICE	WA Police Dept	Northam	Officer on Duty	131444
HOSPITAL	St John of God	Midland	Reception	08 9462 4000

MEETING POINTS		
TEAM	LOCATION	TIME
STAGE TEAM	Pharmacy Carpark, Bakers Hill	7.20
EMERGENCY VEHICLES	Service Park – Winvale Park Complex	8.00

SPECTATOR POINTS			
DISTANCE	LOCATION	SENIOR MARSHAL	CALL SIGN
0.00	N/A	N/A	N/A

COMMUNICATIONS CHANNELS	
COMMAND	22
SOS	15
CB	

10.1 Jordan Stages SS3 & SS6 Overview Map



10.2 Jordan Stages SS9 (reverse) Overview Map



10.3 Jordan Stage Bunt Lists

JORDAN Stage Bunt List

DRAFT 1

ROAD CLOSURE & BUNT PLAN

Event:	WINVALE PARK 2024	Stage Commander:	Approved Rally Controller
Stage:	JORDAN SS38	Setter:	
Meet point:	PHARMACY CARPARK BAKEYS HILL	Inspection date:	
Meet Time (24hr):		Event date (dd/mm/yyyy):	Sunday 14 April 2024
			Signature

Accum Total	Indep	Inst No	Road Name	Road Closure	Official's Details	SOS	Radio	Mesh	Rolls of Tape (50m)	Delimiters	Spectator Points	Comments
TOTAL	22	22	0	4	0	3	4	22	2	0	0	10
0.00	0.00	START				START		SO	1			START
0.13	0.13	5		L			1	SO/R	2			WELL BACK
0.79	0.09	5						L	1	SOIL		DELINEATORS ALREADY IN PLACE
1.01	0.22	6						L	1			
1.77	0.76	8						L	1			
1.90	0.93	8						L	1			
2.21	0.41	9						SO	1			
2.60	0.39	10		L			1	SO	1			BETWEEN FENCE AND THE ROCKS
2.70	0.10	10						L	1			
2.74	0.04							L	1			
3.24	0.50							R	1			
3.43	0.19							R	1			
3.55	0.12			L			1	R	1			PARK ON ROCKS (4X4)
3.68	0.31	15						L	1			
4.06	0.20	16						SO	1			
4.07	0.01	16						L/L	2			EITHER SIDE OF TREE
4.25	0.18	17				SO		SO	1			
4.44	0.19	18						R	1			
5.12	0.68							L/R	2			MESH GRAVEL ROADS
5.23	0.11	19		L			1	L	1			TAPE AROUND WATER TANK
5.41	0.18	20						SO	2			
5.93	0.52	22						L	1			
6.09	0.16	FF										FLYING FINISH
6.32	0.23	STOP				STOP						STOP

JORDAN Stage Bunt List Reverse

DRAFT 1

ROAD CLOSURE & BUNT PLAN

Event: WINVALE PARK 2024		Stage: JORDAN REVERSE		Stage Commander:		Approved Rally Controller:						
Meet point:		Meet Time (24hr):		Event date (dd/mm/yyyy):		Inspection date:						
Accum Total		Instr No	Road Name	Road Closure	Official's Details	SOS	Radio	Mesh	Rolls of Tape (50m)	Delimiters	Spectator Points	Comments
0.00	0.00	START				3	3	23	2	0	0	START
0.06	0.06	2						SO	1			
0.58	0.52	4						L	1			
0.73	0.15	5		R			1	L/R	2			TAPE OFF WATER TANK MESH GRAVEL ROADS
0.86	0.13							L	1			
1.54	0.68	8						SOIL	3			MESH EITHER SIDE OF TREE
1.74	0.20	9				L		L	1			
1.92	0.18	10						SO	1			
2.13	0.21	11						L	1			
2.44	0.31	12		R				L	1			PARK ON ROCKS (4X4)
2.56	0.12							R	1			
2.75	0.19							R	1			
3.20	0.45							R	1			
3.31	0.11	16		R			1	SO	1			BETWEEN FENCE AND THE ROCKS
3.54	0.23							SO	1			
3.78	0.24	17						L	1			
4.18	0.40	18						R	1			
4.22	0.04	18						R	1			
4.89	0.67	21						R	1			
4.97	0.08	21						R	1			
5.21	0.24	23						L/SO	2			
5.29	0.08	23		SO			1	L	1			
5.78	0.49											
5.80	0.02	FF										FLYING FINISH
5.13	0.33	STOP				STOP						STOP

11.0 Christine

Key Stage times for Course Cars are in accordance with the Running Schedule in Section 16 of this document.

KEY OFFICIALS	NAME	CALL SIGN	MOBILE
STAGE COMMANDER-Start	Ross Tapper	Christine Start	0418 950 022
DEPUTY STAGE COMMANDER-Stop	Megan Peek	Christine Stop	0424 779 143
POST CHIEF TIME CONTROL			
POST CHIEF STAGE START	Jan Tapper		
POST CHIEF FLYING FINISH			
POST CHIEF STAGE STOP			
SETTER	Sam Wriighthouse	Christine Setter	

EMERGENCY SERVICES				
SERVICE	PROVIDER	LOCATED AT	CONTACT	CALL SIGN / PHONE
MIV		Service Park		MIV
Rescue	Ashendon First Intervention	Service Park		Rescue One
Rescue	Ashendon First Intervention	Service Park		Rescue Two
FIRE	Ashendon First Intervention	Service Park		Rescue One
AMBULANCE	St John Ambulance	Service Park		Ambulance
POLICE	WA Police Dept	Northam	Officer on Duty	131444
HOSPITAL	St John of God	Midland	Reception	08 9462 4000

MEETING POINTS		
TEAM	LOCATION	TIME
STAGE TEAM	Information Bay Bakers Hill	
EMERGENCY VEHICLES	Service Park – Winvale Park Complex	8.00

SPECTATOR POINTS			
DISTANCE	LOCATION	SENIOR MARSHAL	CALL SIGN
0.00	N/A	N/A	N/A

COMMUNICATIONS CHANNELS	
COMMAND	22
SOS	19
CB	

11.1 Christine SS10 Overview Map



11.2 Christine Stage Bunt List

CHRISTINE Stage Bunt List

DRAFT 1

ROAD CLOSURE & BUNT PLAN

Event: WINVALE PARK 2024	Stage Commander: SAM / LAM	Approved Rally Controller: _____
Stage: CHRISTINA	Setter: _____	Signature: _____
Meet point: _____	Inspection date: _____	
Meet Time (24hr): _____	Event date (dd/mm/yyyy): Sunday 14 April 2024	

Accum Total	Indep	Inset No	Road Name	Road Closure	Official's Details	SOS	Radio	Mesh	Rolls of Tape (50m)	Delimiters	Spectator Points	Comments
0.00	0.00	27	0	0	0	3	0	49	11	0	0	20
0.03	0.03	START										START
0.05	0.02	2	L	L			1	LX2 2	L/R 2			MAKE SURE GATE IS CLOSED AND TAPED
0.07	0.02	2						L 2				
0.13	0.06	3						RX2 2	L 1			
0.15	0.02	3							L 1			
0.17	0.02	3							L 1			
0.18	0.01	3										
0.33	0.15	4	SO	SO			1	LX2 2				
0.37	0.04	4						SO 1				
0.47	0.10	5						L 1	R 1			
0.50	0.03	5						L/R 2				
0.53	0.03	6	R	R			1	L/R 2				RC FROM INT 7 HELENA
0.56	0.03	6						LX2 2				
0.58	0.02	6							L 1			
0.60	0.02	6							LX2/R 3			
0.63	0.03								L 3			
0.75	0.12								R 1			
0.82	0.07								L 1			
0.87	0.05											
0.90	0.03	8	R	R			1	R 1	LX2 2			RC FROM INT 13 HELENA
0.94	0.04							R 1				
1.00	0.06	9	R	R			1	R 1				RC FROM INT 15 HELENA
1.02	0.02											
1.13	0.11	10							L 1			
1.14	0.01	10							L 1			
1.18	0.04								L/R 2			
1.32	0.14	11						SO 1	SO 1			MESH BETWEEN POSTS. TAPE FROM POST TO FENCE
1.36	0.04	11						R 1				
1.41	0.05							R 1				
1.65	0.24	12						L/R 2				USE DEL THAT ARE THERE ON THE LEFT
1.73	0.08	13						RX2 2				
1.83	0.10	14						L/R 2				
1.95	0.12								R 1			
2.29	0.34	17							R 1			
2.30	0.01	17						R 1				
2.31	0.01	17						R 1				
2.33	0.02	17						R 1				
2.49	0.16	18										SLIDE DEL THAT ARE THERE IN PLACE
2.51	0.02	18										SLIDE DEL THAT ARE THERE IN PLACE
2.71	0.20											
2.76	0.05											
2.80	0.04	20						R 1	R 1			
2.83	0.03	20						SO/R 1	L 1			
2.86	0.03	20						R 1				

ROAD CLOSURE & BUNT PLAN

Event: WINVALE PARK 2024		Stage Commander:		Approved Rally Controller							
Stage: CHRISTINA		Setter: SAM I LAM									
Meet point:		Inspection date:									
Meet Time (24hr):		Event date (dd/mm/yyyy):		Signature							
Accum Total	Indep	Inst No	Road Closure	Official's Details	SOS	Radio	Mesh	Rolls of Tape (50m)	Delineators	Spectator Points	Comments
2.93	0.07		R			1	R				RC FROM INT 31 HELENA
3.27	0.34							L 1			TAPE FROM 3.27 TO 3.35 ACROSS FENCE
3.35	0.08							L 1			
3.41	0.06						R 1				
3.48	0.07						R 1				
3.60	0.18							L 1			
4.01	0.35	22						L 1			MAKE SURE GATE IS CLOSED AND TAPED !!!
4.28	0.27	23					L 1				
4.32	0.04						L 1				
4.58	0.26							L 1			
5.25	0.67	27	R			1	R 1				TAPE IN FRONT OF TIP
5.34	0.09		R			1	R 1				RC FROM INT 9 GEORGIA
5.95	0.61		R			1	R 1				RC FROM INT 16 GEORGIA AND MOVE SOS TO HERE ASWELL
6.07	0.12	FF									DOES NOT MOVE
6.17	0.10						LX2 2				FLYING FINISH
6.31	0.14	STOP									DEL IN PLACE MESH EITHER SIDE
											STOP

12.0 Road Closure Sign

Overall size A3. Place on all barriers and mesh using tape

13.0 Stage Safety Officer Accident Appraisal

Form

Reported Accident on Stage

Accident Reported by Whom?.....

Location of Accident:.....

Car Number:.....Type of Incident: Accident Fire

Cross Displayed? OK Sign Displayed? No Signs Displayed?

Was the reporting competitor stopped by the crew involved in the accident and asked to bring information to you? Yes No

Brief description of Accident:.....

Car Missing

There are many reasons for competitors to stop during a stage, including punctures, mechanical problems and accidents. The most important role of the Safety Officer is to establish whether the vehicle is missing or has stopped because of one of the above reasons.

Competitor reported missing by whom?..... Missing Competitor

Number:.....

Competitor number sent before missing car:.....Arrived at finish.....

3 competitors sent after missing car: 1.....2.....3.....

Have they arrived at the finish? : 1.....2.....3.....

- Check with start to confirm vehicle started stage
- Check with flying finish to see whether vehicle has been recorded as finishing.
- Have the finish Interview the next three competitors. Have they seen the missing vehicles, or seen any evidence of a major off over an embankment etc?

Report to the Stage Commander

Spectator Out of Control

Reported by Whom?.....

Location:.....How Many?.....

Confirmed by competitors: Yes No

What is the actual problem?.....

Report to the Stage Commander:

14.0 Accident Appraisal Form

Your Name.....

Your Location.....

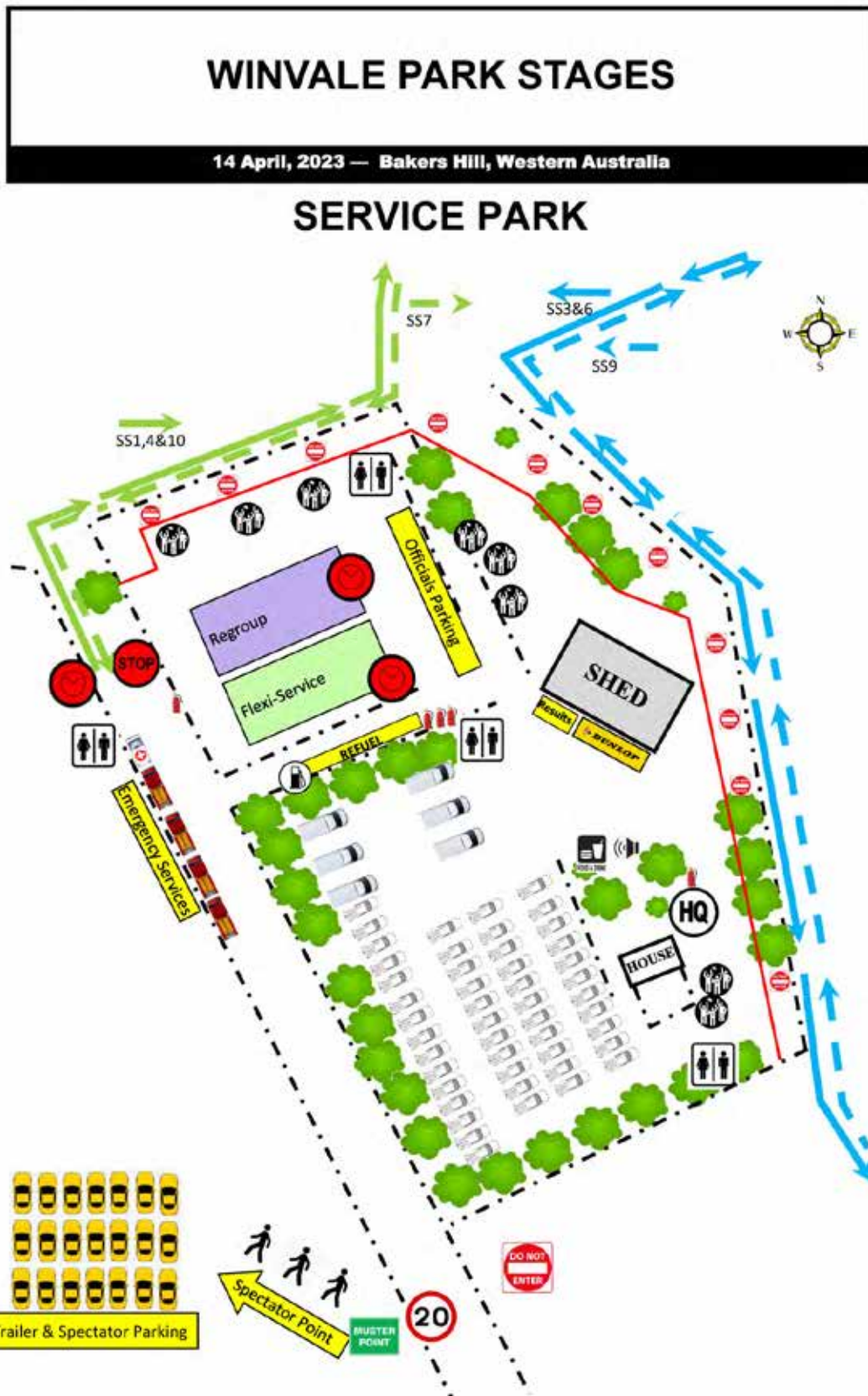
<i>Question</i>	<i>Response</i>
Whom is reporting the accident to you	
What is their- location Please include Special Stage Name	
What is the nature of the incident	
Is the Car blocking the road, if so is some one diverting the rally cars	
Is the Motor or kill switch off	
If it is fire is it vegetation or vehicle	
If it is an accident is the green cross being displayed	
Is there any movement from the suspected injured parties	
Is anyone trapped	
Is the injured person conscious, can they tell you what day it is	
Are they breathing, is it noisy or absent (Look for rise and fall of the chest)	
Is the patient Bleeding, if yes where from And is it a trickle or is it spurting Attempt to apply pressure if spurting	
Is there any obvious injury, if so what	
Is the injured person vomiting or fitting	

When relaying the information via phone or radio – speak slowly and remain calm, don't yell, report the information accurately. You may need to initiate lifesaving action if you are trained in that area or be given first aid instructions from the Command Centre prior to the FIV arriving.

Removing helmets and people from cars is dangerous and should only be undertaken in life threatening situations

REMEMBER – Be calm; speak slowly and clearly – YOUR ACTIONS MAY SAVE A LIFE!!!

15.0 Service Park Map



16.0 Running Schedule



Novus Glass Winvale Park Stages WA RALLY CHAMPIONSHIP 2024 RUNNING SCHEDULE Sunday, 14th April



Stage TC / SS	Location	SS Distance	Liaison Distance	Total Distance	Time Allowed	Set By	Car 000	Car 0	Car 0	1st Car Due
0A	RallySafe Tech Zone	(36.42)	(8.58)	(45.00)						
0B	Start				8:06	8:21	8:30	8:42	8:50	8:50
1	Helena 1	7.51	0.09	0.09	8:14	8:34	8:40	8:52	9:00	9:03
2	Georgia 1	4.61	0.48	7.99	8:37	9:06	8:46	8:58	9:05	9:06
3	Jordan 1	6.09	2.19	6.80	9:14	9:22	9:06	9:14	9:22	9:26
3A	Flexi-Service Holding IN				9:17	9:24	9:25	9:32	9:41	9:44
3B	Flexi-Service Holding OUT / Service A IN				9:40	9:55	9:38	9:48	9:57	9:57
Note: Crews have a maximum of 25 mins to move their car into service from hold ng area.										
3C	Flexi-Service A	(18.21)	(4.29)	(22.50)	10:18	10:25	10:33	10:43	11:12	11:12
3D	Regroup 1 OUT				10:37	10:36	10:52	11:04	11:15	11:15
4	Helena 2	7.51	0.09	0.09	10:35	10:55	10:55	11:07	11:18	11:18
5	Georgia 2	4.61	0.48	7.99	10:58	11:02	10:51	11:06	11:17	11:18
6	Jordan 2	6.09	2.19	6.80	11:14	11:17	11:21	11:26	11:34	11:38
6A	Flexi-Service 2 Holding IN				11:35	11:33	11:50	11:44	11:53	11:56
6B	Flexi-Service 2 Holding OUT / Service B IN				12:00	11:56	12:00	12:05	12:09	12:09
Note: Crews have a maximum of 25 mins to move their car into service from hold ng area.										
6C	Flexi-Service B	(18.21)	(4.29)	(22.50)	12:13	12:28	12:45	12:55	13:24	13:24
6D	Regroup 2 OUT				12:37	12:52	13:04	13:16	13:24	13:24
7	Helena Reverse	7.64	1.22	8.86	12:40	13:00	13:12	13:24	13:32	13:32
8	Georgia Reverse	4.63	1.40	6.03	12:56	13:16	13:31	13:40	13:48	13:48
9	Jordan Reverse	5.80	3.00	8.80	13:16	13:36	13:43	13:53	14:01	14:01
9A	Flexi-Service 3 Holding IN				13:38	13:53	14:00	14:10	14:18	14:18
9B	Flexi-Service 3 Holding OUT / Service C IN				14:03	14:18	14:25	14:35	14:43	14:43
Note: Crews have a maximum of 25 mins to move their car into service from hold ng area.										
9C	Flexi-Service C	(18.07)	(6.19)	(24.26)	14:33	14:48	14:55	15:05	15:34	15:34
9D	Regroup 3 OUT				14:42	14:57	15:34	15:44	15:53	15:53
10	Chris fine	6.07	0.09	0.09	14:42	15:02	15:02	15:12	15:28	15:28
10A	End of Event - Pace Forms IN				15:02	15:17	15:54	16:04	16:13	16:13
Note: Crews have a maximum of 25 mins to move their car into service from hold ng area.										
FINISH (PAC-FORMS) (6:07) (1:33) (7:40)										
Total Clubman 36.42 8.58 45.00										
Total WARC 60.56 16.10 76.66										
Note: Early Check in Permitted (refer Supp Regs)										

Bakers Hill sunset 2nd April 2023 = 18:10

Early Check in Permitted (refer Supp Regs)

Updated: 23-Mar-23 22:00

1st Car EOS	Last WARC	WARCs Club Obs	First Clubman	Last Clubman	LTL 30 Mins	Rally Sweep Start	Rally Sweep Finish
Car 40	Car 40	Car 41	Car 46	Car 46	10:23	10:53	10:25
10:08	10:13	10:23	10:33	10:35	11:03	10:35	10:35
10:21	10:26	10:36	10:39	10:41	11:09	10:41	10:50
10:41	10:46	10:56	11:26	10:58			
9:30	10:44	10:49	10:59	11:29	11:01	11:06	11:06
9:49	11:02	11:07	11:17	11:47	11:19	11:26	11:26
11:15	11:20	11:30	12:00	11:32			
11:40	11:45	11:55	12:25	11:57			
12:10	12:15	12:25	12:55	12:27			
12:30	12:35	12:45	13:15	12:47			
12:33	12:38	12:48	13:18	12:50			
11:25	12:36	0:05	12:41	12:51	13:21	12:53	13:02
11:42	12:56	0:05	13:01	13:11	13:41	13:13	13:18
12:01	13:14	0:05	13:19	13:29	13:59	13:31	13:38
Car 40	Car 40	Car 41	Car 42	Car 42	14:22	14:52	14:24
14:22	14:27	14:37	15:07	14:29			
14:42	14:47	14:57	15:27	14:44			
Car 40	Car 40	Car 41	Car 42	Car 42	15:20	15:50	15:22
14:50	14:55	15:05	15:35	14:52			
13:42	14:53	15:03	15:33	14:55	15:08	15:04	15:04
13:55	15:09	15:19	15:49	15:11	15:16	15:16	15:16
14:09	15:22	15:32	16:02	15:24	15:30	15:30	15:30
15:36	16:01	16:11	16:41	15:38			
16:01	16:01	16:11	16:41	16:03			
16:31	16:31	16:41	17:11	16:33			
17:11	17:11	17:21	17:41	17:13			
17:16	17:16	17:26	17:46	17:18			
16:06	17:19	17:29	17:49	16:01	17:27	17:27	17:27
17:31	17:31	17:41	18:01	17:33			

